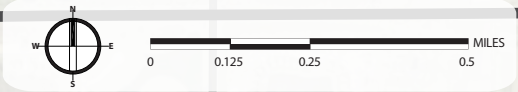
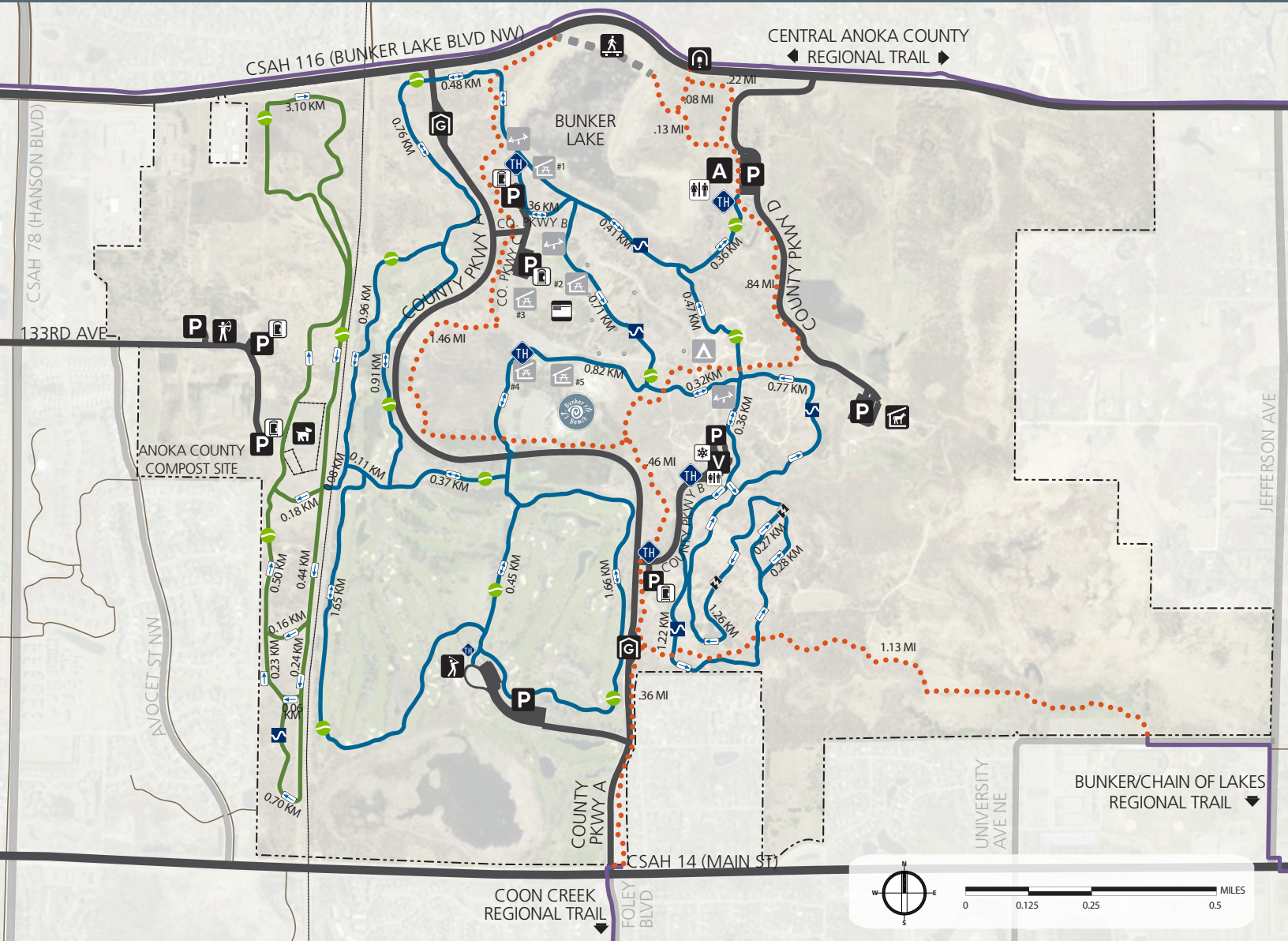


BUNKER HILLS REGIONAL PARK



- | | | |
|-----------------------|-------------------------|-------------------------------|
| PARK BOUNDARY | ONE-WAY TRAIL | TUNNEL |
| PAVED ROADS | TWO-WAY TRAIL | PLAYGROUND |
| PLOWED TRAILS | TRAILHEAD | ACTIVITY CENTER |
| REGIONAL TRAILS | SNOWSHOE / SKI RENTAL | CAMPGROUND VISITORS CENTER |
| MUNICIPAL TRAILS | VETERANS MEMORIAL | CAMPGROUND (CLOSED IN WINTER) |
| SKIJORING TRAILS | BUNKER BEACH WATER PARK | BUNKER HILLS GOLF COURSE |
| SKI TRAILS | BOARDWALK (NOT PLOWED) | ARCHERY CENTER |
| LEAST DIFFICULT TRAIL | PARKING LOT | GATE HOUSE / INFORMATION |
| MORE DIFFICULT TRAIL | PICNIC PAVILION | BUNKER STABLES |
| MOST DIFFICULT TRAIL | RESTROOMS | OFF LEASH DOG PARK |
| | PORTABLE TOILETS | |

NOTE: TRAIL DISTANCES ARE SHOWN FOR SEGMENTS WITHIN THE PARK AND BETWEEN TRAIL INTERSECTIONS OF THE SAME TRAIL SURFACE TYPE.