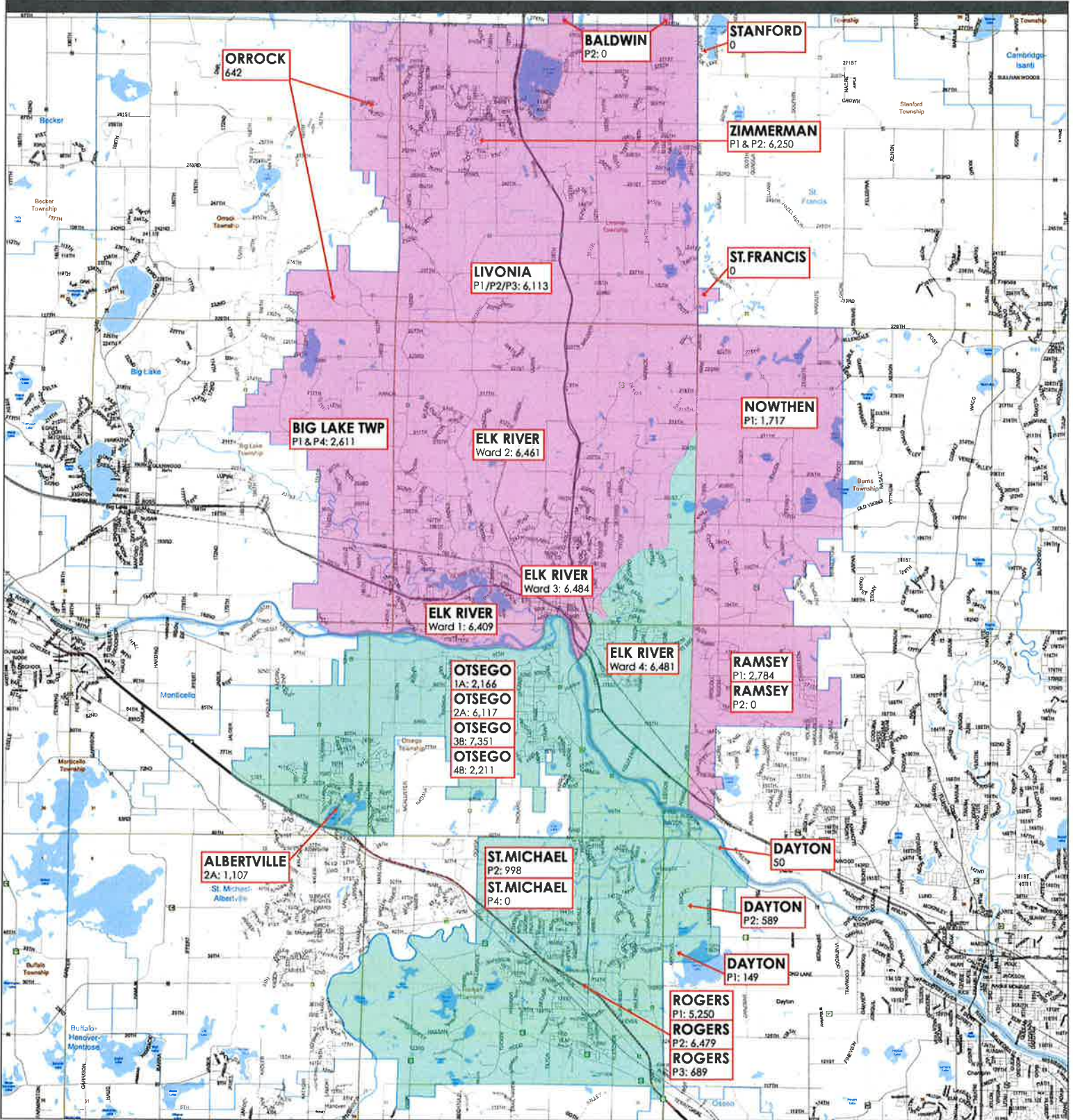


DISTRICT ELECTION BOUNDARY MAP



MAP KEY

ELECTION DISTRICT ONE	POPULATION
City of Elk River – Ward 1 (Sherburne Co.)	6,409
City of Elk River – Ward 2 (Sherburne Co.)	6,461
City of Elk River – Ward 3 (Sherburne Co.)	6,484
Big Lake Township – P1 & P4 (Sherburne Co.)	2,611
City of Zimmerman – P1 & P2 (Sherburne Co.)	6,250
Livonia Township – P1/P2/P3 (Sherburne Co.)	6,113
Orrock Township (Sherburne Co.)	642
Baldwin Township – P2 (Sherburne Co.)	0
City of Nowthen – P1 (Anoka Co.)	1,717
City of Ramsey – W2 P1 (Anoka Co.)	2,784
City of Ramsey – W2 P2 (Anoka Co.)	0
City of St. Francis (Anoka Co.)	0
Stanford Township (Itasca Co.)	0
TOTAL	39,471

ELECTION DISTRICT TWO	POPULATION
City of Elk River – Ward 4 (Sherburne Co.)	6,481
City of Otsego – 1A (Wright Co.)	2,166
City of Otsego – 2A (Wright Co.)	6,117
City of Otsego – 3B (Wright Co.)	7,351
City of Otsego – 4B (Wright Co.)	2,211
City of Albertville – 2A (Wright Co.)	1,107
City of St. Michael – P2 (Wright Co.)	998
City of St. Michael – P4 (Wright Co.)	0
City of Dayton (Wright Co.)	50
City of Dayton – P1 (Hennepin Co.)	149
City of Dayton – P2 (Hennepin Co.)	589
City of Rogers – P1 (Hennepin Co.)	5,250
City of Rogers – P2 (Hennepin Co.)	6,479
City of Rogers – P3 (Hennepin Co.)	689
TOTAL	39,637