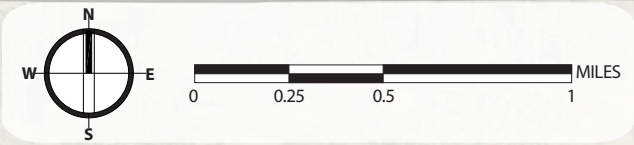
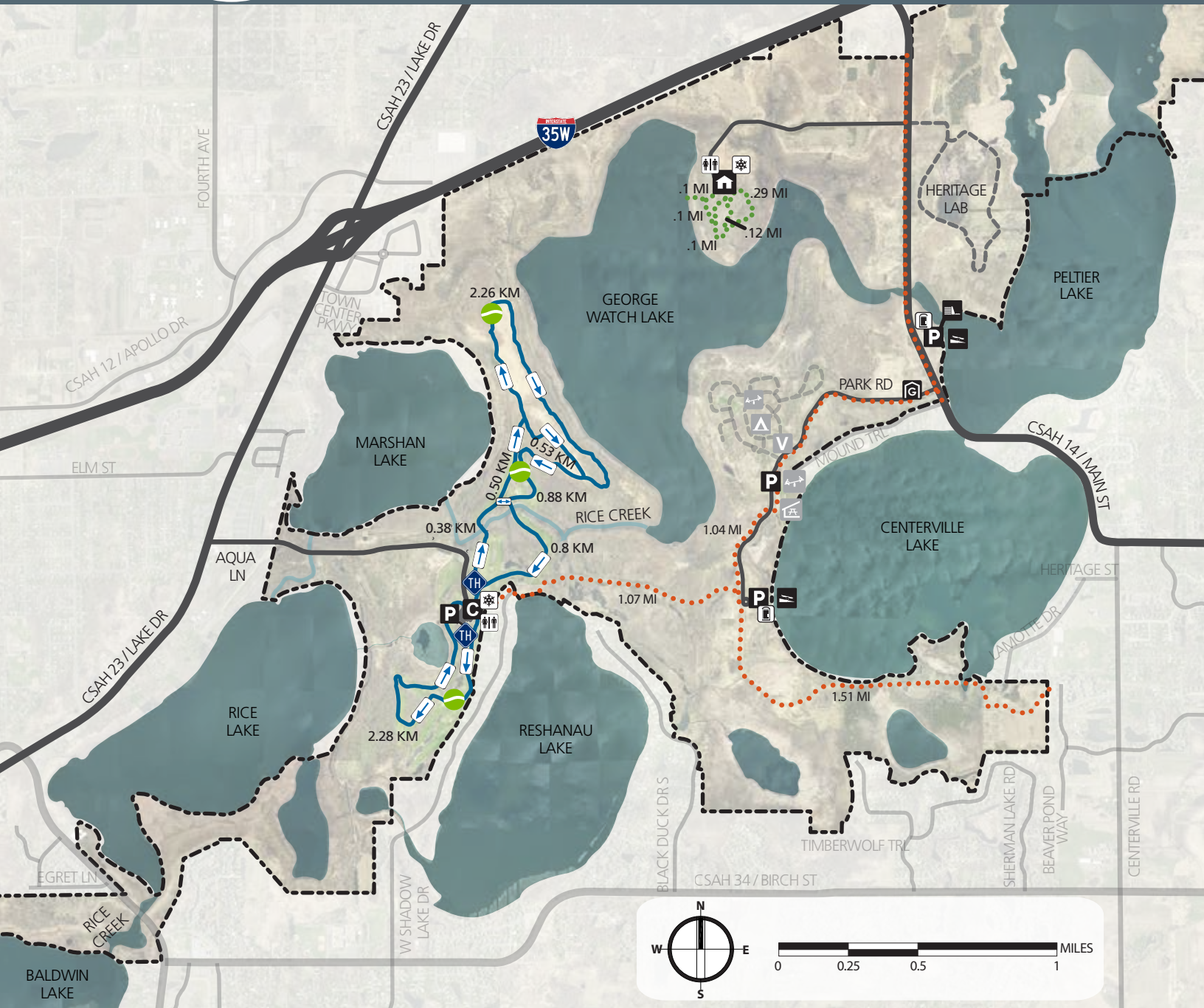


RICE CREEK CHAIN OF LAKES

PARK RESERVE



- | | | |
|------------------------------------|--------------------------|--|
| PARK BOUNDARY | TRAILHEAD | PORTABLE TOILETS |
| PAVED ROADS | SNOWSHOE / SKI RENTAL | BOAT LAUNCH |
| PLOWED TRAILS | CHOMONIX CLUB HOUSE | PELTIER DAM |
| HIKING / SNOWSHOE TRAILS | WARGO NATURE CENTER | PLAYGROUND |
| SKI TRAILS | PARKING LOT | PICNIC PAVILION |
| LEAST DIFFICULT TRAIL (ALL TRAILS) | GATE HOUSE / INFORMATION | VISITOR CENTER (CLOSED IN WINTER) |
| ONE-WAY TRAIL | RESTROOMS | RICE CREEK CAMPGROUND (CLOSED IN WINTER) |
| TWO-WAY TRAIL | | |

NOTE: TRAIL DISTANCES ARE SHOWN FOR SEGMENTS WITHIN THE PARK AND BETWEEN TRAIL INTERSECTIONS OF THE SAME TRAIL SURFACE TYPE.